



30 Gordon Road, Rochester, Kent, ME2 3HJ

GUIDE PRICE £250,000 - £255,000

ONLINE VIEWING AVAILABLE

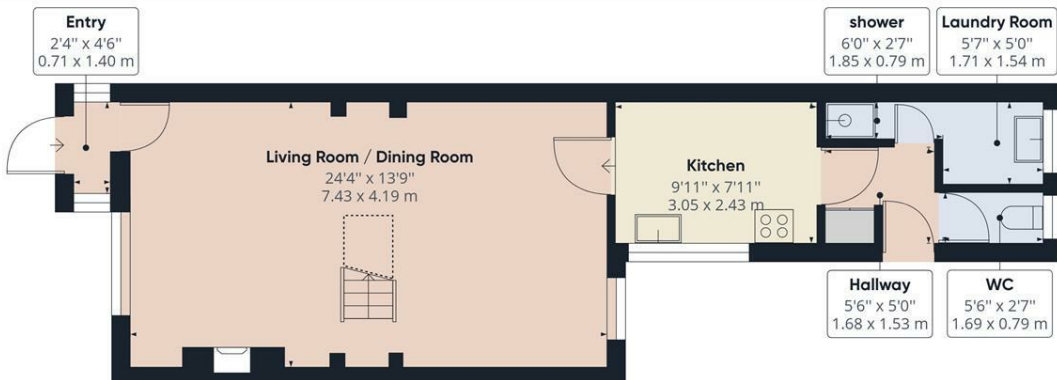
MMS Sales and Lettings are pleased to present this two bedroom period home to the sales market. With the rare layout of a 1st floor bathroom separate from the bedroom along with a down stairs shower and cloak room, this property really is a must see. Upon entering via the porch you are greeted by a fantastic open plan lounge diner with the open stairs case leading to the first floor. The kitchen is a galley style with plenty of cupboards and work top space. There is a lobby way leading to a utility room with cubicle shower, and a down stairs cloakroom. To the first floor there are two double bedrooms and a family bathroom. The rear garden is patio and lawn with a lovely secluded feel. There is also a court yard front garden. Additional benefits include gas central heating and double glazed windows, Gordon Road is ideally located for easy access to the local primary schools, nurseries and is within easy walking distance to Strood town center and Station,

Call now to book your internal viewing.

COUNCIL TAX BAND B

£250,000

- TWO DOUBLE BEDROOMS
- FIRST FLOOR SEPARATE BATHROOM
- GROUND FLOOR CLOAK ROOM
- GROUND FLOOR UTILITY WITH SHOWER
- OPEN PLAN LOUNGE/DINER
- FITTED KITCHEN
- RERA GARDEN
- FRONT COURT YARD GARDEN
- WALKABLE TO TRAIN STATION AND TOWN CENTRE



Ground Floor



Floor 1

Approximate total area⁽¹⁾

897.86 ft²
83.41 m²

Reduced headroom

11.70 ft²
1.09 m²

(1) Excluding balconies and terraces

Reduced headroom
(below 1.5m/4.92ft)

While every attempt has been made to ensure accuracy, all measurements are approximate, not to scale. This floor plan is for illustrative purposes only.

GIRAFFE360

